



Replacing the Battery in an XL200 Rev C

WARNING: BEFORE REPLACING THE BATTERY, YOU MUST BACK UP ALL PARAMETERS. LOSS OF POWER TO THE XL200 CONTROLLER WILL CLEAR ALL PARAMETERS.



Figure 1 - Front of XL200

1. Flip the controller so that it is face down.



Figure 2 - Back of XL200

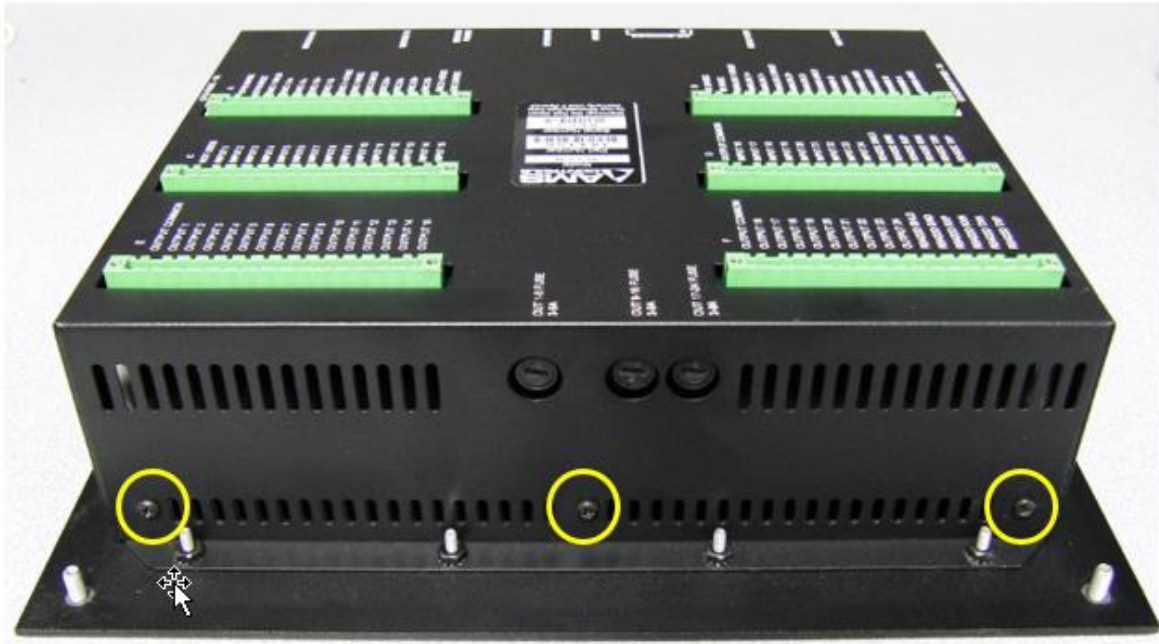


Figure 3 - Bottom of XL200

2. Remove the 3 screws on the bottom of the controller circled in yellow in Figure 3.

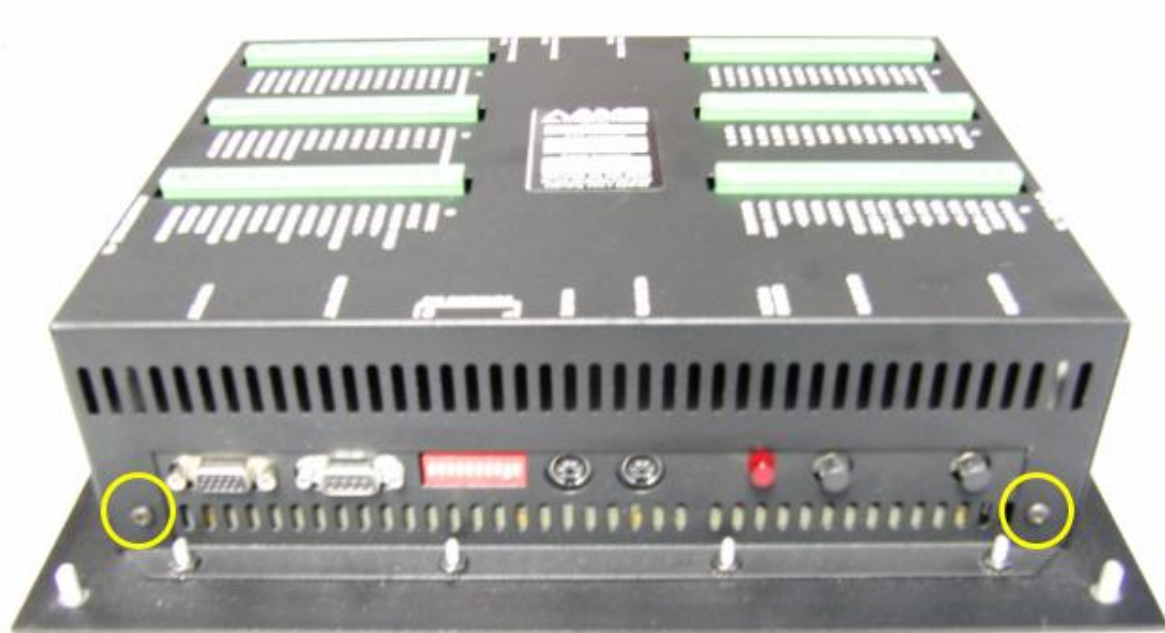


Figure 4 - Top of XL200

3. Remove the 2 screws on the top of the controller circled in yellow in Figure 4.

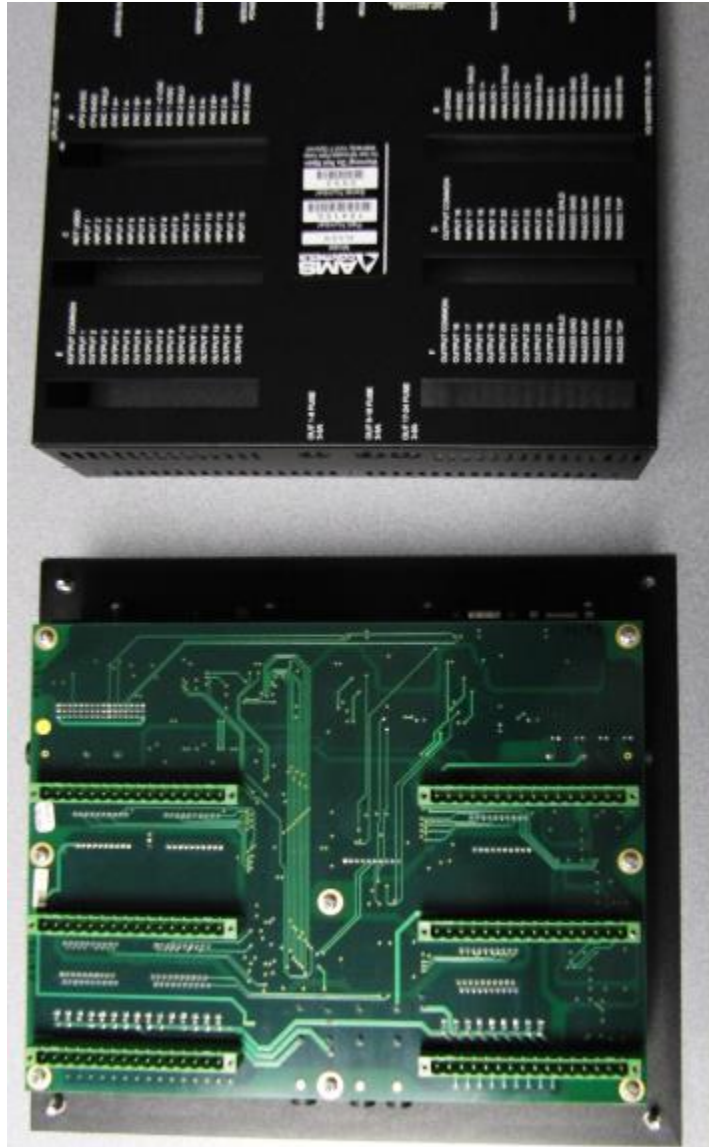


Figure 5 - Back cover and XL200 with back cover removed

4. Remove the back cover as shown in Figure 5.

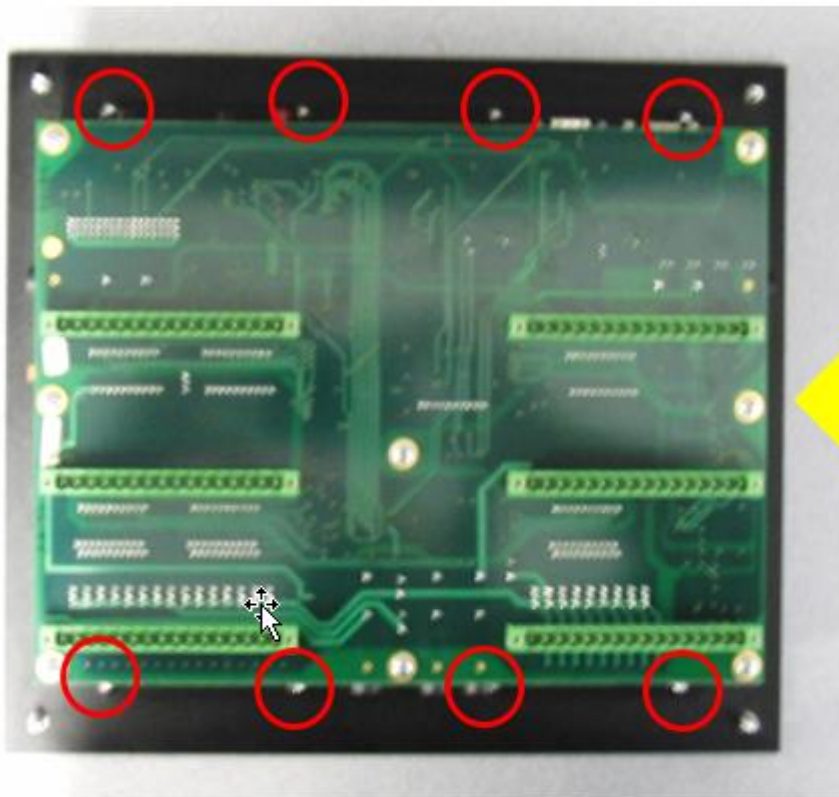


Figure 6 - XL200 with back cover removed

5. Remove the 8 nuts circled in red in Figure 6.
6. Lift the circuit boards slowly from the right side as shown in Figure 6. While lifting, remove the strand of wires from the front panel. This is done by pulling the white connector straight up off of the front panel as shown in Figure 7. After lifting the boards slightly more, remove the white ribbon from the front panel. This is done by pulling the black connector straight up off of the front panel as shown in Figure 8.

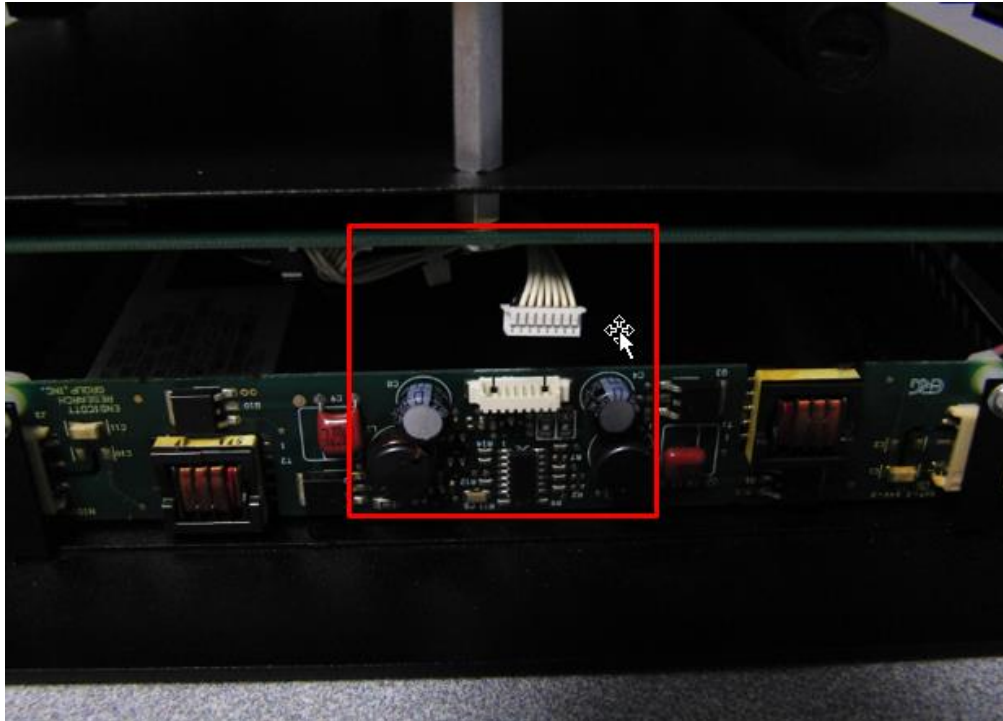


Figure 7 - White connector removed

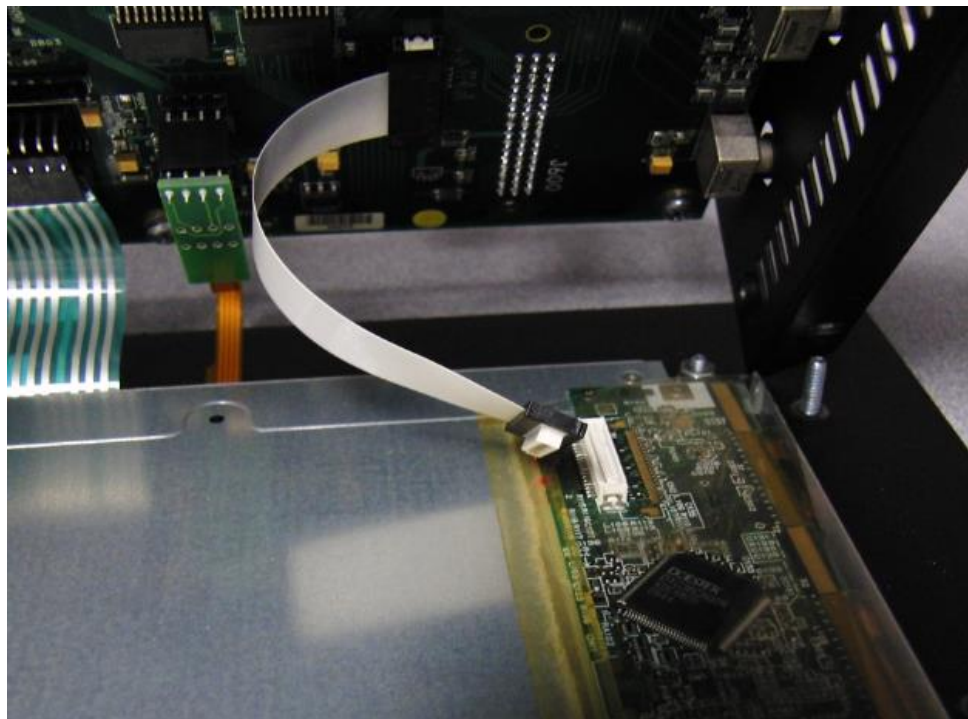


Figure 8 - Black connector removed



Figure 9 - Boards opened

7. Open the boards as shown in Figure 9 while making sure not to pull apart the connections on the other side of the board. Leave the circuit boards up as shown in Figure 9.

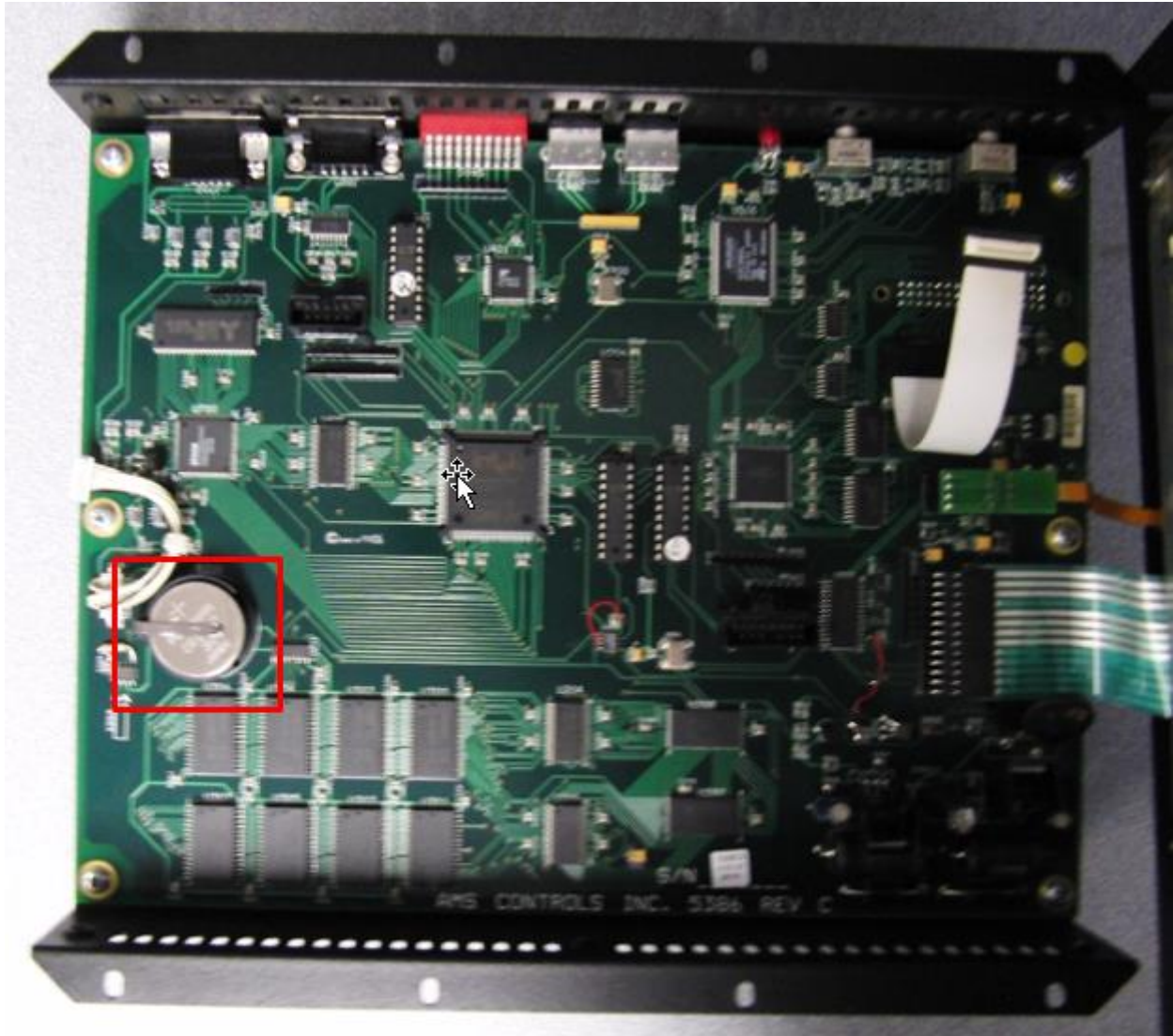


Figure 10 - Bottom side of board

8. Locate the Panasonic CR2330 battery as shown in Figure 10.
9. Lightly pry the right side of the battery up until the right side raises.
10. Grab the right side of the battery and pull it out towards the right.



Figure 11 - Battery partially removed

11. Insert the new Panasonic CR2330 battery with the positive (+) side facing up by inserting it from the top side and sliding it under the clip until it snaps into place.
12. Close the boards back on top of the front panel. While lowering the board, reconnect the wires to the back of the front panel.
13. Screw on the 8 nuts removed in step 5.
14. Place the back cover over the circuit boards.
15. Put the 5 screws back into place that were removed in steps 2 and 3.
16. Congratulations, you've successfully replaced the battery in your XL200 Rev C.